



BATH HOUSE

Artisan, English-made fragrance and skincare

Artisan fragrances and natural skincare, made in Cumbria.

From the very beginning our aim was simple, to make the very best products possible, ones which would be a joy to use and bring benefits of active natural ingredients to the skin.

Today, our products are natural, vegan and sustainable and are all made at our own making rooms. We have six flagship Bath House stores in the Lake District and the North of England, and a fantastic team who helps to make it all happen.

Key players in the Bath House story are the independent luxury retailers, hotels and beauty stores across the UK who use and sell our products, and who have supported our brand over the years.

We would like to thank everyone and look forward to Bath House continuing to innovate, flourish and grow.

Many thanks from the Bath House founders,
Abigail, Gareth, Pauline, Glyn and Nigel

Index

| | |
|-----------------------------|-----------|
| Intro | / 2 - 7 |
| Home Fragrance | / 8 - 11 |
| Fragrance | / 12 - 13 |
| Body & Bathe Sets | / 14 - 15 |
| Bathe, Shower & Bodycare | / 16 - 18 |
| Handcare | / 19 - 20 |
| Face Care | / 21 |
| Shave & Groom | / 22 - 23 |
| Merchandising | / 24 |
| Collection Index | / 25 - 31 |
| Ordering Details | / 32 |





Artisan, natural & clean.

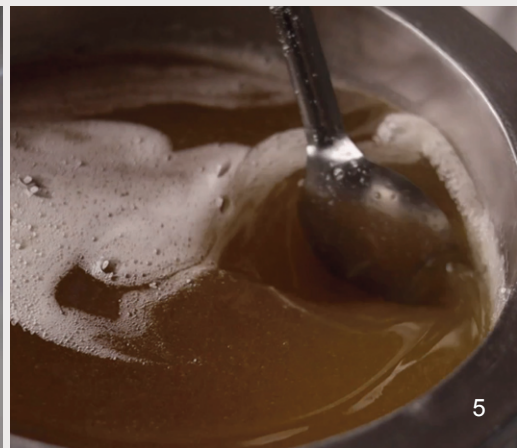
Our products are handmade in small batches ensuring consistent quality and freshness, so they can deliver the key benefits of natural ingredients effectively to your skin.

Our making rooms are located in Dent, Cumbria surrounded by a natural and ancient landscape - a place that inspires the fragrances and formulations we make.

Choosing to use natural ingredients is a very specialist way of making skincare which requires expertise and knowledge gained from experience and practice. Over the years, we have worked closely with our chemists, perfumers and suppliers, continuously sourcing and checking the quality of the ingredients we use in our formulations.

We choose only those which are of a consistently high grade, eco-certified, sustainable and supplied from as close to home as possible.

**In essence, we are not a manufacturer,
we are artisan makers.**





Our sustainable approach.

Products

- All made at our making rooms in Cumbria, England.
- We use a minimum number of ingredients to deliver a maximum effect.
- All use a high percentage of natural ingredients, most around 98%.
- We utilise by-products from the food industry in several formulations.
- Made with eco-certified ingredients, sustainable and traceable.
- Our formulations require less heat and therefore less energy.
- Vegan-friendly, cruelty-free and we have never tested on animals.
- Clear, honest and transparent information on the packaging that shows what is refillable, recyclable and what is not.
- All our products are free from palm oil.
- We only use natural exfoliants such as ground walnut shells and never use microbeads.
- Avoid using synthetic ingredients such parabens, sulphates, SLES, TEA, SLS, DEA, MEA, petroleum, mineral oils, silicones or artificial colours in our formulations.
- There is a significant cost we choose to pay to know where our ingredients come from. For example, we buy natural Glycerine from a sustainable source for £2.94 per kilo, compared to a supplier who cannot trace the source of the Glycerine at 88p per kilo.

Packaging

- We encourage customers to reuse, refill, and lastly recycle.
- We use aluminium bottles, tubes and jars, because they can be endlessly recycled.
- We use recyclable, British-made, strong pharmaceutical glass.
- We use aluminium caps where possible, and encourages customers to reuse their recyclable plastic dispenser pumps.
- Provides a refillable system using plastic pouches (which use 85% less plastic than conventional plastic bottles).
- Our refill pouches can be recycled in normal household recycling.
- Since 2019 we have reduced our use of plastic containers by 95%.
- We are continuously seeking alternatives to plastic.
- Our packaging is designed to be as minimal as possible, only using outer boxes where necessary.
- We have designed boxes to clip together, avoiding the use of glue.
- Our printer uses a low energy printing press and an alcohol free print system and has BSI ISO14001 Environmental Management certification.
- Paper, board and card is FSC approved.
- We don't wrap our cologne boxes in plastic cellophane.

A beautiful life shouldn't cost the earth - we believe in this.

Encouraging small changes to the way we live will help build a more sustainable future for our planet.

Honest, true solutions to climate change may cost us more, so choose well, love what you buy and make it last.

Together we can all make a difference.

Practices

- Our carbon usage is net zero, facilitated through a tree planting scheme.
- Our delivery packing methods include non-plastic tape and recyclable packing, to protect products.
- We bail and recycle all our excess cardboard.
- We use local suppliers, printers and services for sourcing materials from as close to home as possible.
- Our deliveries are made with zero carbon couriers.
- Bath House is a Living Wage employer, accredited by the Living Wage Foundation.
- We employ local people from our rural community, encouraging where possible to walk to work and homeworking, reducing their carbon footprint.
- We are continuing to actively improve our infrastructure with regards to sustainability such as opting for energy saving light bulbs, using recycled office paper, recycling our cardboard outers and waste glass and are currently undertaking an internal audit of this area of the business to seek improvement.
- We support Save Windermere and Mind Over Mountains charities and campaigns, which support our environmental and wellbeing missions.





/ Kirkby Lonsdale store

Home Fragrance

All our candles and diffusers are made in small batches at our making rooms in Cumbria.

They are each infused with bespoke fragrances, some created exclusively for us by perfumer Ruth Mastebroek who worked from unique briefs about our scented memories of special places visited, landscapes imagined and moments remembered.

Our room diffusers are made with a gentle, naturally derived glycerine

base infused with artisan fragrance. The scent lasts up to 6 months.

Our fragrance candles are hand blended with soy wax and rapeseed oil, infused with artisan fragrance. They have a burn time of 40 hours.

Both are made with eco-certified, sustainable and cruelty-free ingredients.

/ Fresh & Clean

Climbing Trees

Childhood adventure remembered, climbing upwards through leaves of green, towards the sun.



Aromatic / Citrus / Green / Earthy
Room Diffuser 200ml / ADCL01*
Fragrance Candle 200g / ACCL01

Bamboo & Jasmine

A scent memory of a summer's evening. From a window, the sound of piano music drifts in the warm air.



White Flowers / Fresh / Cut Stems
Room Diffuser 200ml / ADBJ01*
Fragrance Candle 200g / ACBJ01

Greenhouse

A scent memory of a greenhouse in summer, with its atmosphere, diffused light, ripening fruit and heat.



Herbal / Fresh / Moss / Flowers
Room Diffuser 200ml / ADGR01*
Fragrance Candle 200g / ACGR01

Discovery Sets



Home Discovery Set Greenhouse / ACGR10

60g fragrance candle
60ml room diffuser



Home Discovery Set Winter Night / ACWN10

60g fragrance candle
60ml room diffuser

/ Rich & Warm

NEW Winter Night

A fragrance inspired by cold winter nights, as we savour the warmth and comfort of a crackling fire.



Warm / Spicy / Woody / Citrus
Room Diffuser 200ml / ADWN01*
Fragrance Candle 200g / ACWN01

Faith Is

Moments of emotion are remembered and relived of journeys in the quiet landscape...time to reflect.



Dark / Woody / Sensual / Myrrh
Room Diffuser 200ml / ADFA01*
Fragrance Candle 200g / ACFA01

Hide & Seek

Faded perfumes of a grand country house inspire this fragrance, with the magic and romance of the past.



Fresh Green / Aromatic / Ethereal
Room Diffuser 200ml / ADHS01*
Fragrance Candle 200g / ACHS01

Patchouli & Black Pepper

An iconic fragrance; smoky and nostalgic, inspiring memories of youth, music, love and life.



Warm / Sensual / Smoky / Rich
Room Diffuser 200ml / ADPB01*
Fragrance Candle 200g / ACPB01



/ Knutsford store

Fragrance

Four artisan-made fragrances, exquisitely distinctive with their own unique character.

Our colognes are available in 100ml, and all in the 12ml atomiser, perfect for travel.



Bergamot & Amber

A fresh, clean scent of bergamot, fruity sweet and spicy, blended with citrus notes of mandarin, vanilla, amber and sandalwood

100ml / ABE1

12ml / ABE2



Cedar & Lime

Zesty and woody with fresh lime, bittersweet grapefruit and green bergamot, with warm tones of leather, dry cedar and musk.

100ml / ACC1

12ml / ACC2





I love the spicy notes of this perfume, it lasts very well on my skin. It works very well all the year round, and wearing it always makes me feel good.

Customer Review
Patchouli & Black Pepper Eau De Parfum



Fig & Nutmeg

Fruity and woody, with notes of juicy fig, iris and chamomile layered with nutmeg, clove, sandalwood and smoky patchouli.

100ml / ASF1
12ml / ASF2

Patchouli & Black Pepper

Warm, sensual and earthy, powerful and nostalgic with notes of black pepper, vanilla, patchouli, warm amber and vetiver.

12ml / APB2

Body & Bathe / Gift Sets

We have created some perfect combination sets which have been designed to complement each other.

The packaging is designed by Nigel Brooks, the original illustrator and one of the founders of Bath House, making a unique and perfect gift.



Travel Kit

- 60ml shampoo
- 60ml conditioner
- 60ml body wash
- 60ml body lotion

Bamboo & Jasmine / ABA222



Try Me Kit

- 60ml bath soak
- 60ml body wash
- 60ml body lotion
- 30ml body cream

Patchouli & Black Pepper / APB222



Beautiful gift for a friend. Quality is excellent and packaging beautiful.

She was very impressed.

Customer Review

Fig & Nutmeg Shower Set



Shower Sets

12ml cologne / eau de parfum

60ml body wash

30ml body cream

Fig & Nutmeg / ASF230

Patchouli & Black Pepper / APB230

Bodycare Duos

300ml body wash

300ml body lotion

Bamboo & Jasmine / ABA225

Patchouli & Black Pepper / APB225

Bathe, Shower & Bodycare

Each formulation is created with a careful balance of natural ingredients chosen to perform specific skincare tasks - hydrating, exfoliating, nourishing and protecting.



Body Lotions / 300ml

Lightweight body moisturisers to maintain skin's hydration.

Bamboo & Jasmine / ABA10*
Patchouli & Black Pepper / APB10*



Hair & Body Washes / 300ml

Body cleansers infused with scent and purifying ingredients.

Bamboo & Jasmine / ABA20*
Bergamot & Amber / ABE20*
Cedar & Lime / ACC20*
Fig & Nutmeg / ASF20*
Patchouli & Black Pepper / APB20*

*Refills available



Bodycare Duos

300ml body wash
300ml body lotion

Bamboo & Jasmine / ABA225
Patchouli & Black Pepper / APB225



I absolutely love this product. It is the most gorgeous scent and foam, it beats every other bath product I've used by far.

Customer Review
Bergamot & Amber Bath Soak



Bath Soaks / 500ml

Therapeutic blends, to condition and scent the skin.

- Bamboo & Jasmine / ABA22
- Bergamot & Amber / ABE22
- Cedar & Lime / ACC22
- Fig & Nutmeg / ASF22
- Patchouli & Black Pepper / APB22



Bath Salts / 175g

Fragranced natural Dead Sea salts, to soften water, promoting wellbeing.

- Bamboo & Jasmine / ABA23
- Patchouli &
- Black Pepper / APB23



Deodorants / 50ml

Aluminium-free, created to help reduce and mask underarm odour.

- Bergamot & Amber / ABE16
- Cedar & Lime / ACC16
- Fig & Nutmeg / ASF16



Body Cream / 200ml

Lightweight and easily absorbed for daily use to moisturise the skin, helping to prevent dryness.

Patchouli & Black Pepper / APB11



Body Scrub / 200ml

A blend of naturally exfoliating Walnut Shell and nourishing plant-based butters.

Patchouli & Black Pepper / APB13



By-Product Focus Walnut Shell

- The effective exfoliant used in our body scrub.
- 100% natural.
- A by-product of the food industry.
- Works to improve skin tone.

Not only does it smell divine it really works and exfoliates the skin and leaves it so soft.

Customer Review
Patchouli & Black Pepper Body Scrub

Handcare

Enriched with active natural extracts to help soothe, protect and nourish hands daily.



Hand Washes / 300ml

Effective, gentle cleansing and nourishment.

Bamboo & Jasmine / ABA30*
NEW Greenhouse / AGR30*
Patchouli & Black Pepper / APB30*



Hand Lotions / 300ml

Bringing moisture to dry hands and nails.

Bamboo & Jasmine / ABA31*
NEW Greenhouse / AGR31*
Patchouli & Black Pepper / APB31*



Handcare Duos

300ml hand wash
300ml hand lotion

Bamboo & Jasmine / ABA224
NEW Greenhouse / AGR224
Patchouli & Black Pepper / APB224

*Refills available



By-Product Focus Glycerine

- The base used in our handmade soaps.
- 100% natural.
- A by-product of rapeseed oil manufacture,
- Highly moisturising, during and after use.



Soap Bars / 100g

Hand-made and free from palm oil, ideal for cleansing hands and body.

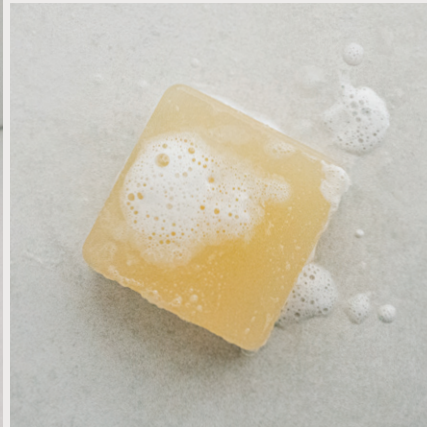
- Bamboo & Jasmine / ABA17
- Bergamot & Amber / ABE17
- Cedar & Lime / ACC17
- Fig & Nutmeg / ASF17
- Patchouli & Black Pepper / APB18
- NEW** Patchouli & Black Pepper (Glycerine) / APB17



Hand Creams / 30ml

Skin-softening creams, keep hands hydrated.

- Bamboo & Jasmine / ABA33
- Patchouli & Black Pepper / APB33



Face Care

Gentle skincare made with active, natural ingredients to promote skin health. Created to be used as part of the daily skincare routine, suitable for all skin types.



Face Wash / 100ml
Deeply cleansing and anti-bacterial, with a mild exfoliating action.

Bergamot & Amber / ABE63



Facial Moisturiser / 100ml
Light and easily absorbed, hydrates, revitalises and protects skin daily.

Bergamot & Amber / ABE62



Face Balm / 100ml
A nourishing balm to deeply moisturise, soothe and promote healthy skin.

Fig & Nutmeg / ASF60

By-Product Focus Orange Peel Powder

- A gentle exfoliant used in our face wash.
- 100% natural.
- A by-product of the juice industry.
- Rich in vitamin C.





Shave & Groom

Our specific shaving products are all comfortable and effective to use, delivering a close shave whilst nurturing the skin.

To maintain beard health, our much-loved 100% natural oils work to maintain hair and skin health.



Shave Soap / 200g
Creates a rich, nourishing lather, suitable for face and body.

Bergamot & Amber / ABE91*
Fig & Nutmeg / ASF91*



Shave Oil / 30ml
Hydrating oil blend to calm skin and aid glide.

Bergamot & Amber / ABE90
Cedar & Lime / ACC90
Fig & Nutmeg / ASF90

*Refills available

The gel is great quality, it smells great and works well. Effective, smooth and non-irritating.

With environmentally conscious packaging too.

Customer Review
Fig & Nutmeg Shave Gel



Shave Gel / 100ml

A dual action gel for a comfortable shave, nourishes the skin.

Fig & Nutmeg / ASF61



NEW Shave Cream / 100ml

Deeply moisturising, created for a close, comfortable shave.

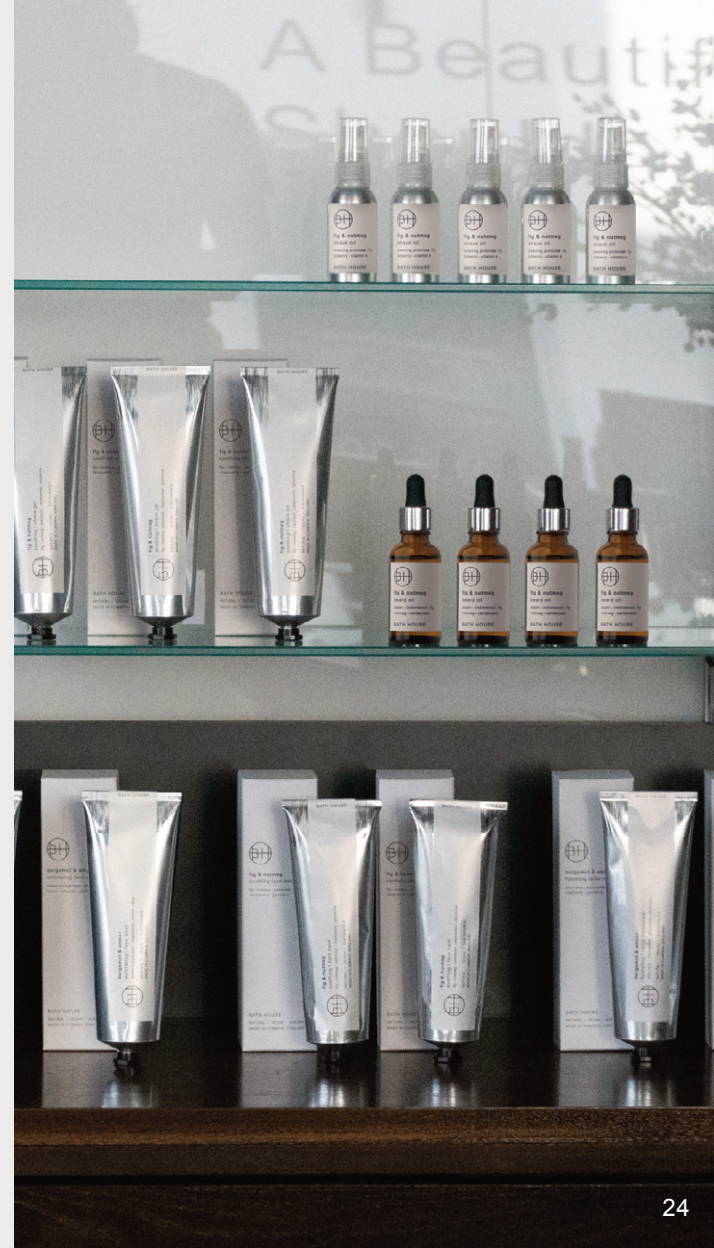
Bergamot & Amber / ABE94



Beard Oils / 30ml

Aromatic oil blends, to soften and condition hair and skin.

Bergamot & Amber / ABE92
Cedar & Lime / ACC92
Fig & Nutmeg / ASF92



A customer who loves is a customer who buys...

We have carefully created visual merchandising material and guidelines to help you communicate our vision and help you to replicate our brand's image in your store. To see how we choose to merchandise in our own stores, please see images on pages 1, 3, 8 and 11 for reference.

As you (and we!) know, a successful visual merchandising strategy helps establish a strong visual identity and is therefore an essential driver of brand consistency.

With feedback from stores we have devised two methods to merchandise the Bath House brand. This choice will depend on how you choose to purchase the products.

We can provide showcards which can be positioned above, beside or behind the relevant products, to guide the customers. Choose to display by collection or category.

Display By Collection If you prefer to purchase a collection/s, we recommend displaying the fragrances separately, making it easier for customers to shop their fragrance choice.



For example, our Fig & Nutmeg collection



Display By Category If you purchase across the board, or have more than three collections we recommend displaying our products based on product type.



For example, our bathing and shower products



Allow the customers to try our products...

We encourage you to help customers to connect with our brand by amplifying the sensory qualities of the products, known as sensory marketing.

This method of merchandising will be most effective if you are able to engage all of a potential customer's senses through offering the ability to try the products, creating a unique and unforgettable customer experience.

Support the customer by explaining the unique product ingredients, where it's made, its sustainable features, problems it solves and benefits it brings to the customer. The important part is that the explanation is clear and helps leads to a purchase.

A customer who loves is a customer who buys. The more customers sample and learn about the products, the more likely they will purchase and even come back for more.



We can provide testers with tags and labels to clearly define these 'tester' products for your customers.





Bamboo & Jasmine

Fragranced with the fresh, crisp scent of cut green stems, bamboo, soft white jasmine wrapped in lime blossom and delicate gardenia.

Fresh / Clean / White Florals / Green



Hand Cream
30ml / ABA33

Soap Bar
100g / ABA17

Hand Wash
300ml / ABA30
500ml Refill / ABA130

Hand Lotion
300ml / ABA31
500ml Refill / ABA131

Hair & Body Wash
300ml / ABA20
500ml Refill / ABA120

Bath Soak
500ml / ABA22

Bath Salts
175g / ABA23

Body Lotion
300ml / ABA10
500ml Refill / ABA110



Fragrance Candle
200g / ACBJO1

Room Diffuser
200ml + vase + reeds / ADBJO1
200ml Refill / ADBJO2

Travel Kit
/ ABA222
60ml shampoo + 60ml conditioner
60ml body lotion + 60ml body wash



Bodycare Duo
/ ABA225
300ml body wash
300ml body lotion

Handcare Duo
/ ABA224
300ml hand wash
300ml hand lotion

Patchouli & Black Pepper

Warm, sensual and earthy. A rich narcotic perfume, powerful, nostalgic and dreamy with notes of black pepper, vanilla, patchouli, warm amber and vetiver.

Sensual / Rich / Warm / Smoky / Soulful



Hand Wash
300ml / APB30
500ml Refill / APB130

Hand Lotion
300ml / APB31
500ml Refill / APB131

Hand Cream
30ml / APB33

Soap Bar
100g / APB18

NEW Glycerine Soap Bar
100g / APB17



Body Wash
300ml / APB20
500ml Refill / APB120

Bath Soak
500ml / APB22

Bath Salts
175g / APB23

Body Lotion
300ml / APB10
500ml Refill / APB110

Body Cream
200ml / APB11

Body Scrub
200ml / APB13

Eau De Parfum
12ml / APB2

Fragrance Candle
200g / ACPB01



Room Diffuser
200ml + vase + reeds / ADPBO1
200ml Refill / ADPBO2

Shower Set / APB230
12ml eau de parfum
60ml body wash
30ml body cream

Try Me Kit / APB222
30ml body cream
60ml bath soak
60ml body wash + 60ml lotion

Bodycare Duo
/ APB225
300ml body wash
300ml body lotion

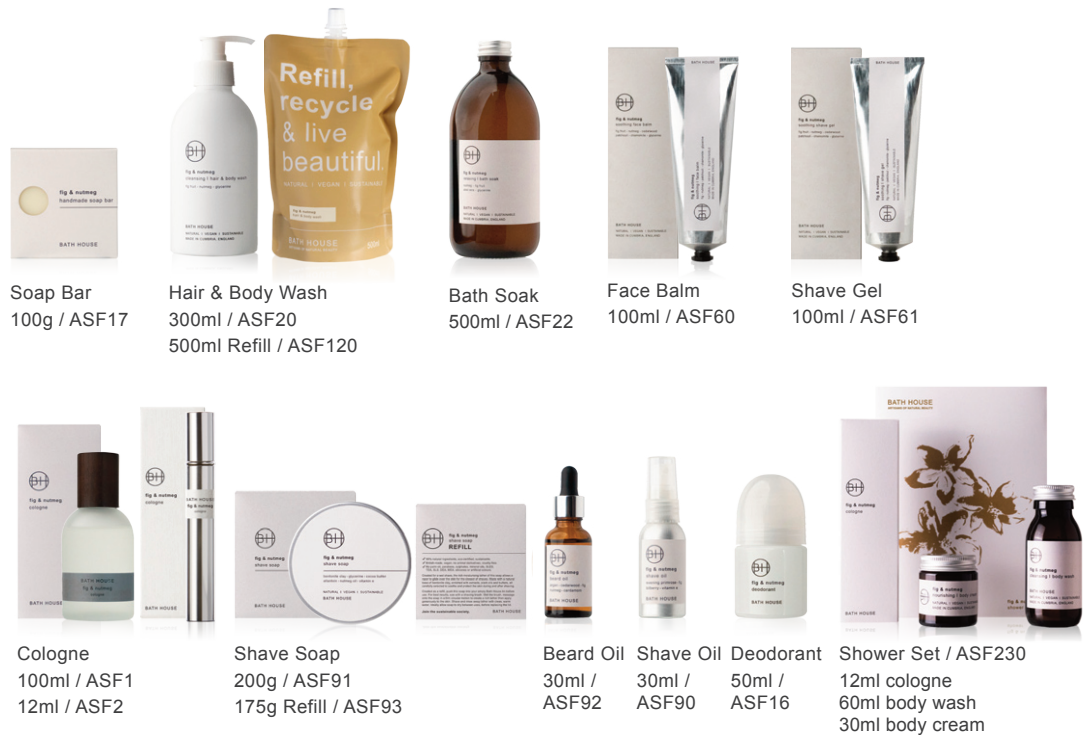
Handcare Duo
/ APB224
300ml hand wash
300ml hand lotion



Fig & Nutmeg

Fresh, sophisticated and classic, a scent tailored with bright notes of juicy fig, iris and chamomile layered with spicy nutmeg, clove, sandalwood and the warmth of amber mixed with a hint of smoky patchouli.

Woody / Fruity / Spicy



Soap Bar
100g / ASF17

Hair & Body Wash
300ml / ASF20
500ml Refill / ASF120

Bath Soak
500ml / ASF22

Face Balm
100ml / ASF60

Shave Gel
100ml / ASF61

Cologne
100ml / ASF1
12ml / ASF2

Shave Soap
200g / ASF91
175g Refill / ASF93

Beard Oil
30ml / ASF92

Shave Oil
30ml / ASF90

Deodorant
50ml / ASF16

Shower Set / ASF230
12ml cologne
60ml body wash
30ml body cream

Bergamot & Amber

A fresh, clean scent of bergamot, fruity sweet and spicy, skilfully blended with citrus notes of mandarin, vanilla, amber and sandalwood creates a distinctive and unforgettable scent.

Citrus / Aromatic / Warm



Soap Bar
100g / ABE17



Hair & Body Wash
300ml / ABE20
500ml Refill / ABE120



Bath Soak
500ml / ABE22



Face Wash
100ml / ABE63



Face Moisturiser
100ml / ABE62



Cologne
100ml / ABE1
12ml / ABE2



Shave Soap
200g / ABE91
175g Refill / ABE93



NEW Shave Cream
100ml /
ABE94



Beard Oil
30ml /
ABE92



Shave Oil
30ml /
ABE90



Deodorant
50ml /
ABE16



Cedar & Lime

Created with the zest and sparkling freshness of limes, green bergamot and bittersweet grapefruit. These bright fragrant notes are subtly blended with warmer more sensual tones of leather, dry cedar and musk.

Intense / Zesty / Woody



Soap Bar
100g / ACC17



Hair & Body Wash
300ml / ACC20
500ml Refill / ACC120



Bath Soak
500ml / ACC22



Cologne
100ml / ACC1
12ml / ACC2



Beard Oil
30ml / ACC92



Shave Oil
30ml / ACC90



Deodorant
50ml / ACC16



Greenhouse

Inspired by the scented memory of a greenhouse with its diffused light, heat and fragrance. Notes of lemon thyme, geranium, garden mint and aromatic green tomatoes are balanced with pungent notes of chrysanthemums mix with earth, moss and fern.

Herbal Green / Aromatic / Fresh / Moss / Flowers



NEW Hand Wash
300ml / AGR30
500ml Refill / AGR130



NEW Hand Lotion
300ml / AGR31
500ml Refill / AGR131



Room Diffuser
200ml + vase + reeds / ADGRO1
200ml Refill / ADGRO2



NEW Handcare Duo
/ AGR224
300ml hand wash
300ml hand lotion



NEW Home Discovery Set / ACGR10
Greenhouse
60g fragrance candle
60ml room diffuser

Gift Sets

Gift a selection of artisan-made body, bathing and skincare products. All beautifully fragranced, beneficial formulations for the body and mind.



Quality Gift Bag / ANB1



Shower Set / APB230
Patchouli & Black Pepper
12ml eau de parfum
60ml body wash
30ml body cream



Shower Set / ASF230
Fig & Nutmeg
12ml cologne
60ml body wash
30ml body cream



Travel Kit / ABA222
Bamboo & Jasmine
60ml shampoo
60ml conditioner
60ml body lotion
60ml body wash



Try Me Kit / APB222
Patchouli & Black Pepper
30ml body cream
60ml bath soak
60ml body lotion
60ml body wash



Home Discovery Set / ACGR10
Greenhouse
60g fragrance candle
60ml room diffuser



Home Discovery Set / ACWN10
Winter Night
60g fragrance candle
60ml room diffuser



Bodycare Set / ABA225
Bamboo & Jasmine
300ml body wash
300ml body lotion



Bodycare Set / APB225
Patchouli & Black Pepper
300ml body wash
300ml body lotion



Handcare Set / ABA224
Bamboo & Jasmine
300ml hand wash
300ml hand lotion



Handcare Set / APB224
Patchouli & Black Pepper
300ml hand wash
300ml hand lotion



Handcare Set / AGR224
Greenhouse
300ml hand wash
300ml hand lotion



Bamboo & Jasmine
 Room Diffuser 200ml / ADBJ01
 Room Diffuser Refill 200ml / ADBJ02
 Fragrance Candle 200g / ACBJ01



Climbing Trees
 Room Diffuser 200ml / ADCL01
 Room Diffuser Refill 200ml / ADCL02
 Fragrance Candle 200g / ACCL01



Faith Is
 Room Diffuser 200ml / ADFA01
 Room Diffuser Refill 200ml / ADFA02
 Fragrance Candle 200g / ACFA01



Greenhouse
 Room Diffuser 200ml / ADGR01
 Room Diffuser Refill 200ml / ADGR02
 Fragrance Candle 200g / ACGR01



Hide & Seek
 Room Diffuser 200ml / ADHS1
 Room Diffuser Refill 200ml / ADHS02
 Fragrance Candle 200g / ACHS01



Patchouli & Black Pepper
 Room Diffuser 200ml / ADPB01
 Room Diffuser Refill 200ml / ADPB02
 Fragrance Candle 200g / ACPB01



NEW Winter Night
 Room Diffuser 200ml / ADWN01
 Room Diffuser Refill 200ml / ADWN02
 Fragrance Candle 200g / ACWN01



NEW Home Discovery Set
 Greenhouse / ACGR10
 60g fragrance candle
 60ml room diffuser



NEW Winter Night
 Winter Night / Awnr10
 60g fragrance candle
 60ml room diffuser

Home Fragrance

Our candles and diffusers are infused with bespoke fragrances, inspired by scented memories of special places visited, landscapes imagined and moments remembered.





Let's talk.

To place your order, contact the team today -
t 015396 21992 / e wholesale@thebathhouseshop.com

Or contact your local sales agent to arrange a face to face or online video meeting at your convenience, to talk through the collection and present samples.

Home Counties & East Anglia / Ashley Leatherland
t 07948 408401 / e ashley.sales@me.com

Midlands / Contact the Bath House Team
t 015396 21992 / e wholesale@thebathhouseshop.com

London / Contact the Bath House Team
t 015396 21992 / e wholesale@thebathhouseshop.com

North East / John Murphy
t 07931 753002 / e johnmurphy@johnmurphy.karoo.co.uk

North West & North Wales / Mark Carney
t 07971 229662 / e info@chilliangencies.co.uk

South East / Martin Hawkes
t 07973 321 031 / e hawkesmartin@icloud.com

South West & South Wales / Contact the Bath House Team
t 015396 21992 / e wholesale@thebathhouseshop.com

Scotland / Helen McNeill
t 07831 650 819 / e mcneillhelen@hotmail.com

Bath House, The Grain Store, Busk Lane,
Sedbergh, Cumbria, England, LA10 5HF

