



BATH HOUSE

Artisan, English-made fragrance and skincare



GREEN
SMALL
BUSINESS
CERTIFIED



Artisan fragrances and natural skincare, made in Cumbria.

From the very beginning our aim was simple, to make the very best products possible, ones which would be a joy to use and bring the benefits of active natural ingredients to the skin.

Today, our products are natural, vegan and sustainable and are all made at our own making rooms. We have six flagship Bath House stores in the Lake District and the North of England, and a fantastic team who helps to make it all happen.

Key players in the Bath House story are the independent luxury retailers, hotels and beauty stores across the UK who use and sell our products, and who have supported our brand over the years.

We would like to thank everyone and look forward to Bath House continuing to innovate, flourish and grow.

Many thanks from the Bath House founders,
Abigail, Gareth, Pauline, Glyn and Nigel

Index

Intro	/ 2-7
Bathe, Shower & Bodycare	/ 8 - 9
Body & Bathe Sets	/ 10
Handcare	/ 12 - 13
Face Care	/ 14
Shave	/ 15
Fragrance	/ 16-17
Home Fragrance	/ 18-19
Home Sets	/ 20
Merchandising	/ 22
Collection Index	/ 23 - 29
Ordering Details	/ 30





Artisan, natural & clean.

Bath House is made by Bath House. Our products are handmade in small batches ensuring consistent quality and freshness, so they can deliver the key benefits of natural ingredients effectively to your skin.

Our making rooms are located in Dent, Cumbria surrounded by a natural and ancient landscape - a place that inspires the fragrances and formulations we make.

Choosing to use natural ingredients is a very specialist way of making skincare which requires expertise and knowledge gained from experience and practice.

We choose only those which are of a consistently high grade, eco-certified, sustainable and supplied from as close to home as possible.

**In essence, we are not a manufacturer,
we are artisan makers.**

We have never tested on animals, and never will. We are approved under the Leaping Bunny programme, the best global cruelty-free assurance.

We have our own in-house formulator and work closely with our suppliers to ensure the products we make use natural and sustainable, eco-certified ingredients.

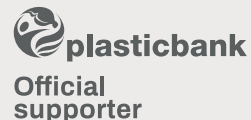


Cruelty Free
INTERNATIONAL





GREEN
SMALL
BUSINESS
CERTIFIED



Our sustainable approach.

Products

- We have never tested on animals and all our products are approved as cruelty-free under the Leaping Bunny Programme.
- Vegan-friendly, and contain no animal derivatives.
- All made at our making rooms in Cumbria, England.
- We use a minimum number of ingredients to deliver a maximum effect.
- All use a high percentage of natural ingredients, most around 98%.
- We utilise by-products from the food industry in several formulations.
- Made with eco-certified ingredients, sustainable and traceable.
- Our formulations require less heat and therefore less energy.
- Clear, honest and transparent information on the packaging that shows what is refillable, recyclable and what is not.
- All our products are free from palm oil.
- We only use natural exfoliants such as ground walnut shells and never use microbeads.
- Avoid using synthetic ingredients such parabens, sulphates, SLES, TEA, SLS, DEA, MEA, petroleum, mineral oils, silicones or artificial colours in our formulations.
- There is a significant cost we choose to pay to know where our ingredients come from. For example, we buy natural Glycerine from a sustainable source for £2.94 per kilo, compared to a supplier who cannot trace the source of the Glycerine at 88p per kilo.

Packaging

- We encourage customers to reuse, refill, and lastly recycle.
- We use aluminium bottles, tubes and jars, because they can be endlessly recycled.
- We use recyclable, British-made, strong pharmaceutical glass.
- We use aluminium caps where possible, and encourage customers to reuse their recyclable plastic dispenser pumps.
- Provides a refillable system using plastic pouches (which use 85% less plastic than conventional plastic bottles).
- Our refill pouches can be recycled in normal household recycling.
- Since 2019 we have reduced our use of plastic containers by 95%.
- We are continuously seeking alternatives to plastic.
- Our packaging is designed to be as minimal as possible, only using outer boxes where necessary.
- We have designed boxes to clip together, avoiding the use of glue.
- Our printer uses a low energy printing press and an alcohol free print system and has BSI ISO14001 Environmental Management certification.
- Paper, board and card is FSC approved.
- We don't wrap our cologne boxes in plastic cellophane.

A beautiful life shouldn't cost the earth - we believe in this.

Encouraging small changes to the way we live will help build a more sustainable future for our planet.

Honest, true solutions to climate change may cost us more, so choose well, love what you buy and make it last.

Together we can all make a difference.

Practices

- Our delivery packing methods include non-plastic tape and recyclable packing, to protect products.
- We bale and recycle all our excess cardboard.
- We use local suppliers, printers and services for sourcing materials from as close to home as possible.
- Bath House is a Living Wage employer, accredited by the Living Wage Foundation.
- We employ local people from our rural community, encouraging where possible to walk to work and homeworking, reducing their carbon footprint.
- We are continuing to actively improve our infrastructure with regards to sustainability such as opting for energy saving light bulbs, using recycled office paper, recycling our cardboard outers and waste glass and are currently undertaking an internal audit of this area of the business to seek improvement.
- We support Save Windermere and Mind Over Mountains charities and campaigns, which support our environmental and wellbeing missions.



Bathe, Shower & Bodycare

Each formulation is created with a careful balance of natural ingredients chosen to perform specific skincare tasks - hydrating, exfoliating, nourishing and protecting.



Body Lotions / 300ml

Lightweight body moisturisers to maintain skin's hydration.

Bamboo & Jasmine / ABA10*
Patchouli & Black Pepper / APB10*
Velvet Orchid & Cardamom / AVO10*



Hair & Body Washes / 300ml

Body cleansers infused with scent and purifying ingredients.

Bamboo & Jasmine / ABA20*
Bergamot & Amber / ABE20*
Cedar & Lime / ACC20*
Fig & Nutmeg / ASF20*
Patchouli & Black Pepper / APB20*
Velvet Orchid & Cardamom / AVO20*



*Refills available



I absolutely love this product. It is the most gorgeous scent and foam, it beats every other bath product I've used by far.

Customer Review
Bergamot & Amber Bath Soak



Bath Soaks / 500ml

Therapeutical blends, to condition and scent the skin.

- Bamboo & Jasmine / ABA22
- Bergamot & Amber / ABE22
- Fig & Nutmeg / ASF22
- Patchouli & Black Pepper / APB22
- Velvet Orchid & Cardamom / AVO22



Bath Salts / 175g

Fragranced natural Dead Sea salts, to soften water, promoting wellbeing.

- Bamboo & Jasmine / ABA23
- Patchouli & Black Pepper / APB23
- Velvet Orchid & Cardamom / AVO23



Deodorants / 50ml

Aluminium-free, created to help reduce and mask underarm odour.

- Bergamot & Amber / ABE16
- Cedar & Lime / ACC16
- Fig & Nutmeg / ASF16

Body & Bathe / Gift Sets

We have created some perfect combination sets which have been designed to complement each other.

They make unique and perfect gifts.



Experience Set

60ml shampoo / 60ml conditioner
60ml body wash / 60ml body lotion
Bamboo & Jasmine / ABA252

60ml bath soak / 60ml body wash
60ml body lotion/ 30ml body cream
Patchouli & Black Pepper / APB252
Velvet Orchid & Cardamom / AVO252



Bodycare Duos

300ml body wash
300ml body lotion

Bamboo & Jasmine / ABA255
Patchouli & Black Pepper / APB255
Velvet Orchid & Cardamom / AVO255

Absolutely beautiful on your skin, makes it feel like silk, the smell is so divine it feels like I've been to a spa!

Velvet Orchid & Cardamom Body Lotion

Works beautifully in tandem with the body lotion. I am a very, very happy customer.

Velvet Orchid & Cardamom Body Wash

Customer Reviews





/ Ilkley store

Handcare

Enriched with active natural extracts to help soothe, protect and nourish hands daily.



Hand Washes / 300ml

Effective, gentle cleansing and nourishment.

Bamboo & Jasmine / ABA30*
Greenhouse / AGR30*
Patchouli & Black Pepper / APB30*



Hand Lotions / 300ml

Bringing moisture to dry hands and nails.

Bamboo & Jasmine / ABA31*
Greenhouse / AGR31*
Patchouli & Black Pepper / APB31*



Handcare Duos

300ml hand wash
300ml hand lotion

Bamboo & Jasmine / ABA254
Greenhouse / AGR254
Patchouli & Black Pepper / APB254

*Refills available

By-Product Focus Glycerine

- The base used in our handmade soaps.
- 100% natural.
- A by-product of rapeseed oil manufacture,
- Highly moisturising, during and after use.



Soap Bars / 100g

Hand-made and free from palm oil, ideal for cleansing hands and body.

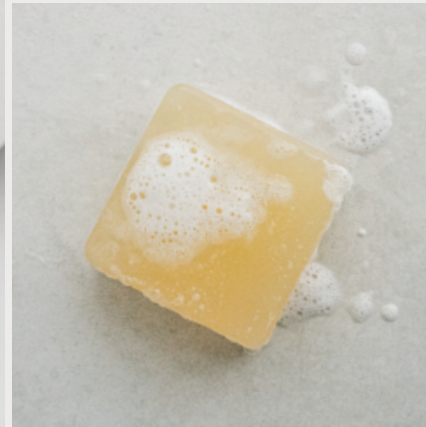
Bamboo & Jasmine / ABA17
Bergamot & Amber / ABE17
Cedar & Lime / ACC17
Fig & Nutmeg / ASF17
Patchouli & Black Pepper / APB18
Velvet Orchid & Cardamom / AVO17



Hand Creams / 30ml

Skin-softening creams, keep hands hydrated.

Bamboo & Jasmine / ABA33
Patchouli & Black Pepper / APB33
Velvet Orchid & Cardamom / AVO33



Face Care

Gentle skincare made with active, natural ingredients to promote skin health. Created to be used as part of the daily skincare routine, suitable for all skin types.



Face Wash / 100ml
Deeply cleansing and anti-bacterial, with a mild exfoliating action.

Bergamot & Amber / ABE63



Facial Moisturiser / 100ml
Light and easily absorbed, hydrates, revitalises and protects skin daily.

Bergamot & Amber / ABE62

By-Product Focus Orange Peel Powder

- A gentle exfoliant used in our face wash.
- 100% natural.
- A by-product of the juice industry.
- Rich in vitamin C.





Shave

Our skin-friendly shaving products help remove unwanted hair whilst nurturing the skin, preventing razor burn and skin irritation.

All suitable for both women and men, face and body.



Shave Gel / 100ml

A dual action gel for a comfortable shave, nourishes the skin.

Fig & Nutmeg / ASF61



Face Balm / 100ml

A nourishing balm to deeply moisturise, soothe and promote healthy skin.

Fig & Nutmeg / ASF60

Fragrance / Colognes

Artisan-made fragrances, exquisitely distinctive with their own unique character.



Bergamot & Amber

A fresh, clean scent of bergamot, fruity sweet and spicy, blended with citrus notes of mandarin, vanilla, amber and sandalwood

100ml / ABE1
15ml / ABE6



Cedar & Lime

Zesty and woody with fresh lime, bittersweet grapefruit and green bergamot, with warm tones of leather, dry cedar and musk.

100ml / ACC1
15ml / ACC6



Fig & Nutmeg

Fruity and woody, with notes of juicy fig, iris and chamomile layered with nutmeg, clove, sandalwood and smoky patchouli.

100ml / ASF1
15ml / ASF6

Fragrance / Eau De Parfums

Small enough for the handbag and ideal for travels, our purse-sized fragrances are the perfect scented accessories.

Available in our eau de parfums, and colognes.



Patchouli & Black Pepper

Warm, sensual and earthy, this rich perfume is powerful, nostalgic and dreamy with notes of black pepper, vanilla, patchouli, amber and vetiver.

15ml / APB6



Velvet Orchid & Cardamom

A warm floral fragrance blending the mystery of orchids and night jasmine with bright hints of cyclamen, vanilla, cardamom and warm pepper.

15ml / AVO6



NEW Bamboo & Jasmine

A fresh, green and aromatic fragrance with calming notes of bamboo, juniper, lemon and eucalyptus, balanced with soft florals and earthy woods.

15ml / ABA6

Home Fragrance

All our candles and diffusers are made in small batches at our making rooms in Cumbria.

They are each infused with bespoke fragrances, some created exclusively for us by perfumer Ruth Mastebroek who worked from unique briefs about our scented memories of special places visited, landscapes imagined and moments remembered.



Bamboo & Jasmine

A scent memory of a summer's evening. From a window, the sound of piano music drifts in the warm air.

White Flowers / Fresh / Cut Stems

Room Diffuser 200ml / ADBJ01*
Fragrance Candle 200g / ACBJ01



Greenhouse

Reminiscent of a greenhouse in summer, with its atmosphere, diffused light, ripening fruit and heat.

Herbal / Fresh / Moss / Flowers

Room Diffuser 200ml / ADGR01*
Fragrance Candle 200g / ACGR01



Climbing Trees

Childhood adventure remembered, climbing upwards through leaves of green, towards the sun.

Aromatic / Citrus / Green / Earthy

Room Diffuser 200ml / ADCL01*
Fragrance Candle 200g / ACCL01

*Refills available





Our room diffusers are infused with artisan fragrance, to subtly transform the mood and atmosphere of a room. The scent lasts up to 6 months.

Our fragrance candles are hand blended with soy wax and rapeseed oil, infused with artisan fragrance. They have a burn time of 40 hours.



Patchouli & Black Pepper

An iconic fragrance; smoky and nostalgic, inspiring memories of youth, music, love and life.

Warm / Sensual / Smoky / Rich

Room Diffuser 200ml / ADPB01*
Fragrance Candle 200g / ACPB01



Winter Night

A fragrance inspired by cold winter nights, as we savour the warmth and comfort of a crackling fire.

Warm / Spicy / Woody / Citrus

Room Diffuser 200ml / ADWN01*
Fragrance Candle 200g / ACWN01

*Refills available

Home Fragrance / Gift Sets

Bringing together our room diffusers and fragrance candles, our sets make a perfect gift or an opportunity to discover much-loved home fragrances.



NEW Home Fragrance Set Patchouli & Black Pepper

/ ACPB20

60g fragrance candle
60ml room diffuser



Home Fragrance Set Winter Night

/ ACWN20

60g fragrance candle
60ml room diffuser



Home Fragrance Set Greenhouse

/ ACGR20

60g fragrance candle
60ml room diffuser



/ Knutsford store



A customer who loves is a customer who buys...

We have carefully created visual merchandising material and guidelines to help you communicate our vision and help you to replicate our brand's image in your store. To see how we choose to merchandise in our own stores, please see images on pages 1, 3, 11 and 21 for reference.

As you (and we!) know, a successful visual merchandising strategy helps establish a strong visual identity and is therefore an essential driver of brand consistency.

With feedback from stores we have devised two methods to merchandise the Bath House brand. This choice will depend on how you choose to purchase the products.

We can provide showcards which can be positioned above, beside or behind the relevant products, to guide the customers. Choose to display by collection or category.

Display By Collection If you prefer to purchase a collection/s, we recommend displaying the fragrances separately, making it easier for customers to shop their fragrance choice.



For example, our Fig & Nutmeg collection



Display By Category If you purchase across the board, or have more than three collections we recommend displaying our products based on product type.



For example, our bathing and shower products



Allow the customers to try our products...

We encourage you to help customers to connect with our brand by amplifying the sensory qualities of the products, known as sensory marketing.

This method of merchandising will be most effective if you are able to engage all of a potential customer's senses through offering the ability to try the products, creating a unique and unforgettable customer experience.

Support the customer by explaining the unique product ingredients, where it's made, its sustainable features, problems it solves and benefits it brings to the customer. The important part is that the explanation is clear and helps leads to a purchase.

A customer who loves is a customer who buys. The more customers sample and learn about the products, the more likely they will purchase and even come back for more.



We can provide testers with tags and labels to clearly define these 'tester' products for your customers.

Velvet Orchid & Cardamom

Fragranced with warm floral fragrance, a blend of orchids and jasmine flowers bursting into bloom, with bright hints of cyclamen, vanilla, cardamom and warm pepper.

Floral / Luxurious / Warm / Magical



Eau De Parfum
15ml / AVO6



Hand Cream
30ml / AVO33



Soap Bar
100g / AVO17



Body Wash
300ml / AVO20
500ml Refill / AVO120



Bath Soak
500ml / AVO22



Bath Salts
175g
/ AVO23



Body Lotion
300ml / AVO10
500ml Refill / AVO110



Experience Set / AVO252
30ml body cream + 60ml bath soak
60ml body wash + 60ml lotion



Bodycare Duo / AVO255
300ml body wash
300ml body lotion





Bamboo & Jasmine

Fragranced with the fresh, crisp scent of cut green stems, bamboo, soft white jasmine wrapped in lime blossom and delicate gardenia.

Fresh / Clean / White Florals / Green



NEW
 Eau De Parfum 15ml / ABA6
 Hand Cream 30ml / ABA33
 Soap Bar 100g / ABA17
 Hand Wash 300ml / ABA30
 500ml Refill / ABA130
 Hand Lotion 300ml / ABA31
 500ml Refill / ABA131
 Hair & Body Wash 300ml / ABA20
 500ml Refill / ABA120
 Bath Soak 500ml / ABA22
 Bath Salts 175g / ABA23
 Body Lotion 300ml / ABA10
 500ml Refill / ABA110



Fragrance Candle 200g / ACBJO1
 Room Diffuser 200ml + vase + reeds / ADBJO1
 200ml Refill / ADBJO2
 Experience Set / ABA252
 60ml shampoo + 60ml conditioner
 60ml body lotion + 60ml body wash
 Bodycare Duo / ABA255
 300ml body wash 300ml body lotion
 Handcare Duo / ABA254
 300ml hand wash 300ml hand lotion



Patchouli & Black Pepper

Warm, sensual and earthy. A rich narcotic perfume, powerful, nostalgic and dreamy with notes of black pepper, vanilla, patchouli, warm amber and vetiver.

Sensual / Rich / Warm / Smoky / Soulful



Eau De Parfum
15ml / APB6

Hand Cream
30ml / APB33

Soap Bar
100g / APB18

Hand Wash
300ml / APB30
500ml Refill / APB130

Hand Lotion
300ml / APB31
500ml Refill / APB131

Body Wash
300ml / APB20
500ml Refill / APB120

Bath Soak
500ml / APB22

Bath Salts
175g / APB23

Body Lotion
300ml / APB10
500ml Refill / APB110



Fragrance Candle
200g / ACPB01

Room Diffuser
200ml + vase + reeds
/ ADPB01
200ml Refill / ADPB02

NEW



Home Fragrance Set / ACPB20
60ml room diffuser
60g fragrance candle
reeds

Experience Set / APB252
30ml body cream
60ml bath soak
60ml body wash + 60ml lotion



Bodycare Duo
/ APB255
300ml body wash
300ml body lotion

Handcare Duo
/ APB254
300ml hand wash
300ml hand lotion

Bergamot & Amber

A fresh, clean scent of bergamot, fruity sweet and spicy, skillfully blended with citrus notes of mandarin, vanilla, amber and sandalwood creates a distinctive and unforgettable scent.

Citrus / Aromatic / Warm



Cologne 100ml / ABE1
 Cologne 15ml / ABE6
 Soap Bar 100g / ABE17
 Hair & Body Wash 300ml / ABE20
 500ml Refill / ABE120



Bath Soak 500ml / ABE22
 Face Wash 100ml / ABE63
 Face Moisturiser 100ml / ABE62
 Deodorant 50ml / ABE16

Fig & Nutmeg

Fresh, sophisticated and classic, a scent tailored with bright notes of juicy fig, iris and chamomile layered with spicy nutmeg, clove, sandalwood and the warmth of amber mixed with a hint of smoky patchouli.

Woody / Fruity / Spicy



Cologne 100ml / ASF1
 Cologne 15ml / ASF6
 Soap Bar 100g / ASF17
 Hair & Body Wash 300ml / ASF20
 500ml Refill / ASF120



Bath Soak 500ml / ASF22
 Face Balm 100ml / ASF60
 Shave Gel 100ml / ASF61
 Deodorant 50ml / ASF16

Cedar & Lime

Created with the zest and sparkling freshness of limes, green bergamot and bittersweet grapefruit. These bright fragrant notes are subtly blended with warmer more sensual tones of leather, dry cedar and musk.

Intense / Zesty / Woody



Cologne
100ml / ACC1

Cologne
15ml / ACC6

Soap Bar
100g / ACC17



Hair & Body Wash
300ml / ACC20
500ml Refill / ACC120

Deodorant
50ml /
ACC16

Greenhouse

Inspired by the scented memory of a greenhouse with its diffused light, heat and fragrance. Notes of lemon thyme, geranium, garden mint and aromatic green tomatoes are balanced with pungent notes of chrysanthemums mix with earth, moss and fern.

Herbal Green / Aromatic / Fresh / Moss / Flowers



Hand Wash
300ml / AGR30
500ml Refill / AGR130

Hand Lotion
300ml / AGR31
500ml Refill / AGR131

Room Diffuser
200ml + vase + reeds / ADGRO1
200ml Refill / ADGRO2



Handcare Duo
/ AGR254
300ml hand wash
300ml hand lotion



Home Fragrance Set / ACGR20
Greenhouse
60g fragrance candle
60ml room diffuser

Gift Sets

Gift a selection of artisan-made body, bathing and skincare products. All beautifully fragranced, beneficial formulations for the body and mind.



Quality Gift Bag / ANB1



Experience Set / ABA252
Bamboo & Jasmine
60ml shampoo
60ml conditioner
60ml body lotion
60ml body wash



Experience Set / APB252
Patchouli & Black Pepper
30ml body cream
60ml bath soak
60ml body lotion
60ml body wash



Experience Set / AVO252
Velvet Orchid & Cardamom
30ml body cream
60ml bath soak
60ml body lotion
60ml body wash



Home Fragrance Set / ACGR20
Greenhouse
60g fragrance candle
60ml room diffuser

NEW



Home Fragrance Set / ACPB20
Patchouli & Black Pepper
60g fragrance candle
60ml room diffuser



Home Fragrance Set / ACWN20
Winter Night
60g fragrance candle
60ml room diffuser



Bodycare Set / ABA255
Bamboo & Jasmine
300ml body wash
300ml body lotion



Bodycare Set / APB255
Patchouli & Black Pepper
300ml body wash
300ml body lotion



Bodycare Set / AVO255
Velvet Orchid & Cardamom
300ml body wash
300ml body lotion



Handcare Set / ABA254
Bamboo & Jasmine
300ml hand wash
300ml hand lotion



Handcare Set / APB254
Patchouli & Black Pepper
300ml hand wash
300ml hand lotion



Handcare Set / AGR254
Greenhouse
300ml hand wash
300ml hand lotion

Home Fragrance

Our candles and diffusers are infused with bespoke fragrances, inspired by scented memories of special places visited, landscapes imagined and moments remembered.



Bamboo & Jasmine
Room Diffuser 200ml / ADBJ01
Room Diffuser Refill 200ml / ADBJ02
Fragrance Candle 200g / ACBJ01



Patchouli & Black Pepper
Room Diffuser 200ml / ADPB01
Room Diffuser Refill 200ml / ADPB02
Fragrance Candle 200g / ACPB01

NEW



Home Fragrance Set / ACPB20
60g fragrance candle
60ml room diffuser



Climbing Trees
Room Diffuser 200ml / ADCL01
Room Diffuser Refill 200ml / ADCL02
Fragrance Candle 200g / ACCL01



Winter Night
Room Diffuser 200ml / ADWN01
Room Diffuser Refill 200ml / ADWN02
Fragrance Candle 200g / ACWN01



Home Fragrance Set / ACWN20
60g fragrance candle
60ml room diffuser



Greenhouse
Room Diffuser 200ml / ADGR01
Room Diffuser Refill 200ml / ADGR02
Fragrance Candle 200g / ACRG01



Home Fragrance Set / ACRG20
60g fragrance candle
60ml room diffuser



Let's talk.

To place your order, contact the team today -
t 015396 21992 / e wholesale@thebathhouseshop.com

Or contact your local sales agent to arrange a face to face or online video meeting at your convenience, to talk through the collection and present samples.

Home Counties & East Anglia / Ashley Leatherland
t 07948 408401 / e ashley.sales@me.com

Midlands / Contact the Bath House Team
t 015396 21992 / e wholesale@thebathhouseshop.com

London / Contact the Bath House Team
t 015396 21992 / e wholesale@thebathhouseshop.com

North East / John Murphy
t 07931 753002 / e johnmurphy@johnmurphy.karoo.co.uk

North West & North Wales / Mark Carney
t 07971 229662 / e info@chilliangencies.co.uk

Scotland / Contact the Bath House Team
t 015396 21992 / e wholesale@thebathhouseshop.com

South East / Martin Hawkes
t 07973 321 031 / e hawkesmartin@icloud.com

South West & South Wales / Contact the Bath House Team
t 015396 21992 / e wholesale@thebathhouseshop.com

Bath House, The Grain Store, Busk Lane,
Sedbergh, Cumbria, England, LA10 5HF

